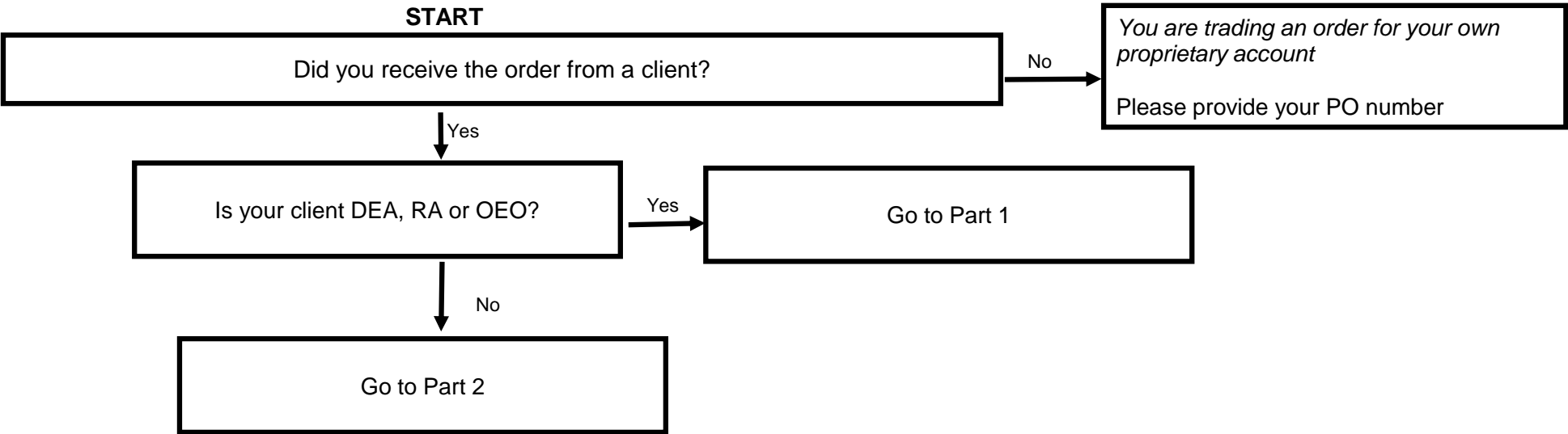
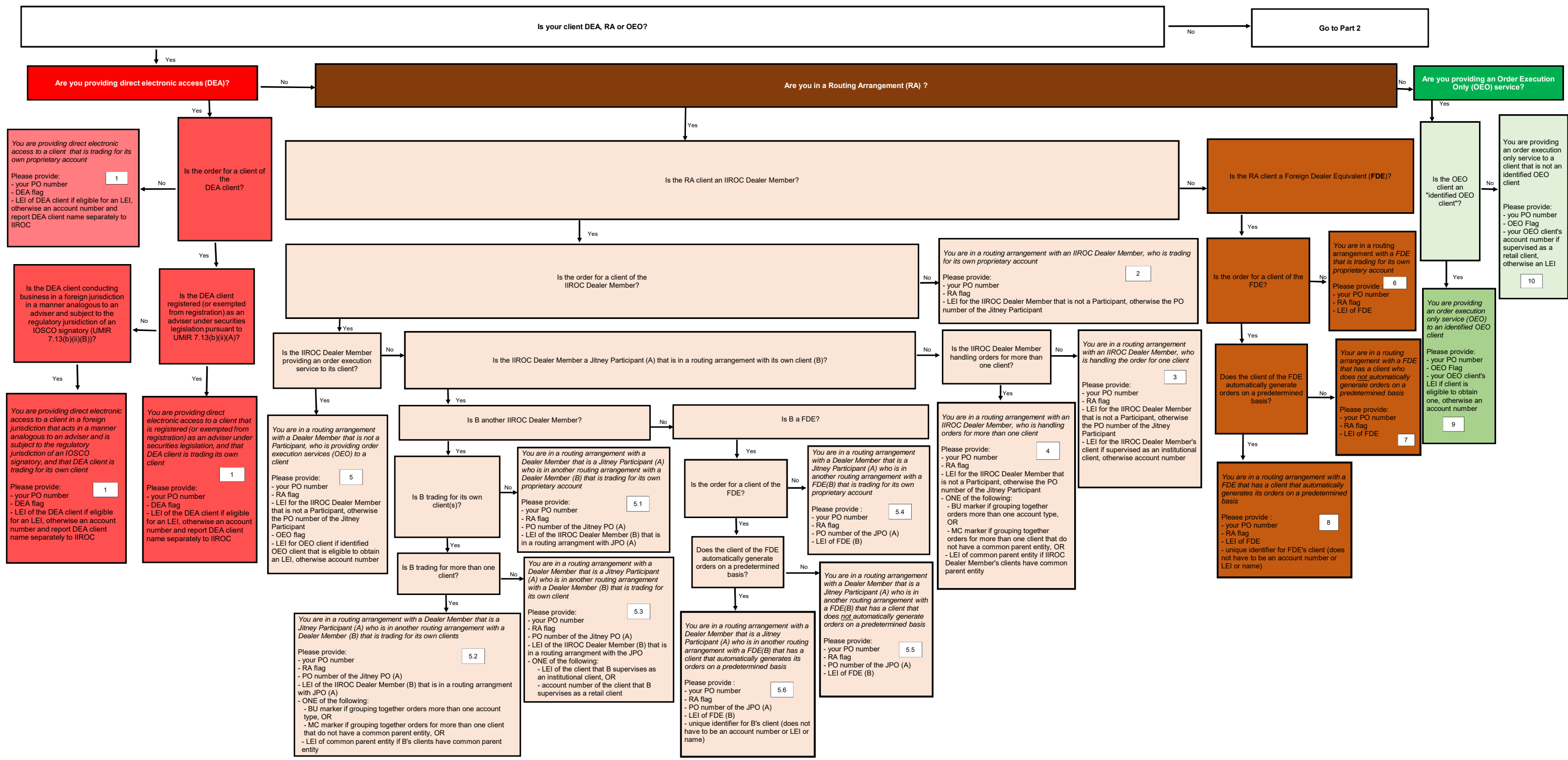


**WHAT GOES ON THE ORDER? Decision Tree for the Executing Participant for Orders in Listed Securities  
(as of February 10, 2021)**



WHAT GOES ON THE ORDER? Decision Tree for the Executing Participant for Orders in Listed Securities  
Part 1 - Executing Participant receives an order from a client that is DEA, RA or OEO  
(as of February 10, 2021)



**WHAT GOES ON THE ORDER? Decision Tree for the Executing Participant for Orders in Listed Securities**  
**Part 2 - Executing Participant receives an order from a client that is not DEA, RA or OEO**  
*(as of February 10, 2021)*

